

# B

952 pi<sup>2</sup>/ft<sup>2</sup>

2 

2 

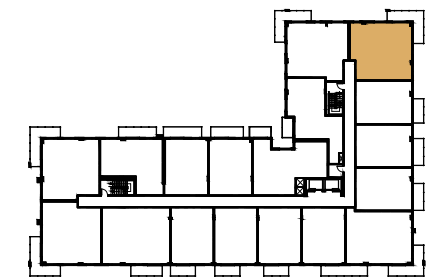
- 1 KITCHEN | CUISINE  
11'-11" x 9'-0"
- 2 LIVING | SALON  
10'-6" x 10'-0"
- 3 DINING | SALLE À MANGER  
9'-9" x 10'-0"
- 4 BATHROOM 1 | SALLE DE BAIN 1  
10'-2" x 5'-0"
- 5 BEDROOM 1 | CHAMBRE 1  
10'-2" x 11'-0"
- 6 BEDROOM 2 | CHAMBRE 2  
9'-1" x 9'-8"
- 7 BATHROOM 2 | SALLE DE BAIN 2  
10'-2" x 5'-0"

\* Dimensions of balconies and terraces vary. | Les dimensions des balcons et des terrasses varient.

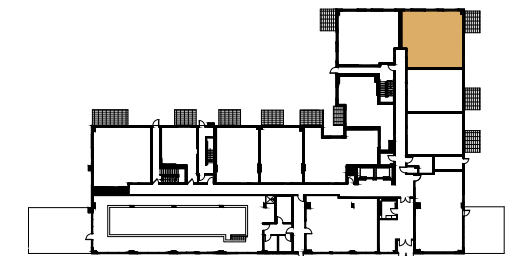


# LIVEO

POINTE-CLAIRE 3



FLOORS | ÉTAGES 2-10



FLOOR | ÉTAGE 1



119 / 221 / 321 / 421 / 521 / 621 /  
721 / 821 / 921 / 1021

RENTAL CONDOS  
CONDO LOCATIFS  
[www.LiveoPointeClaire.com](http://www.LiveoPointeClaire.com)