

# J

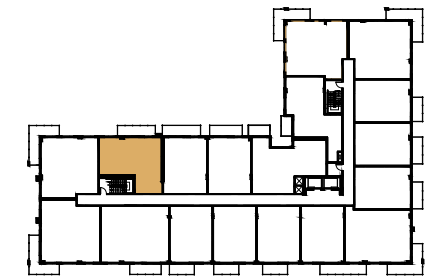
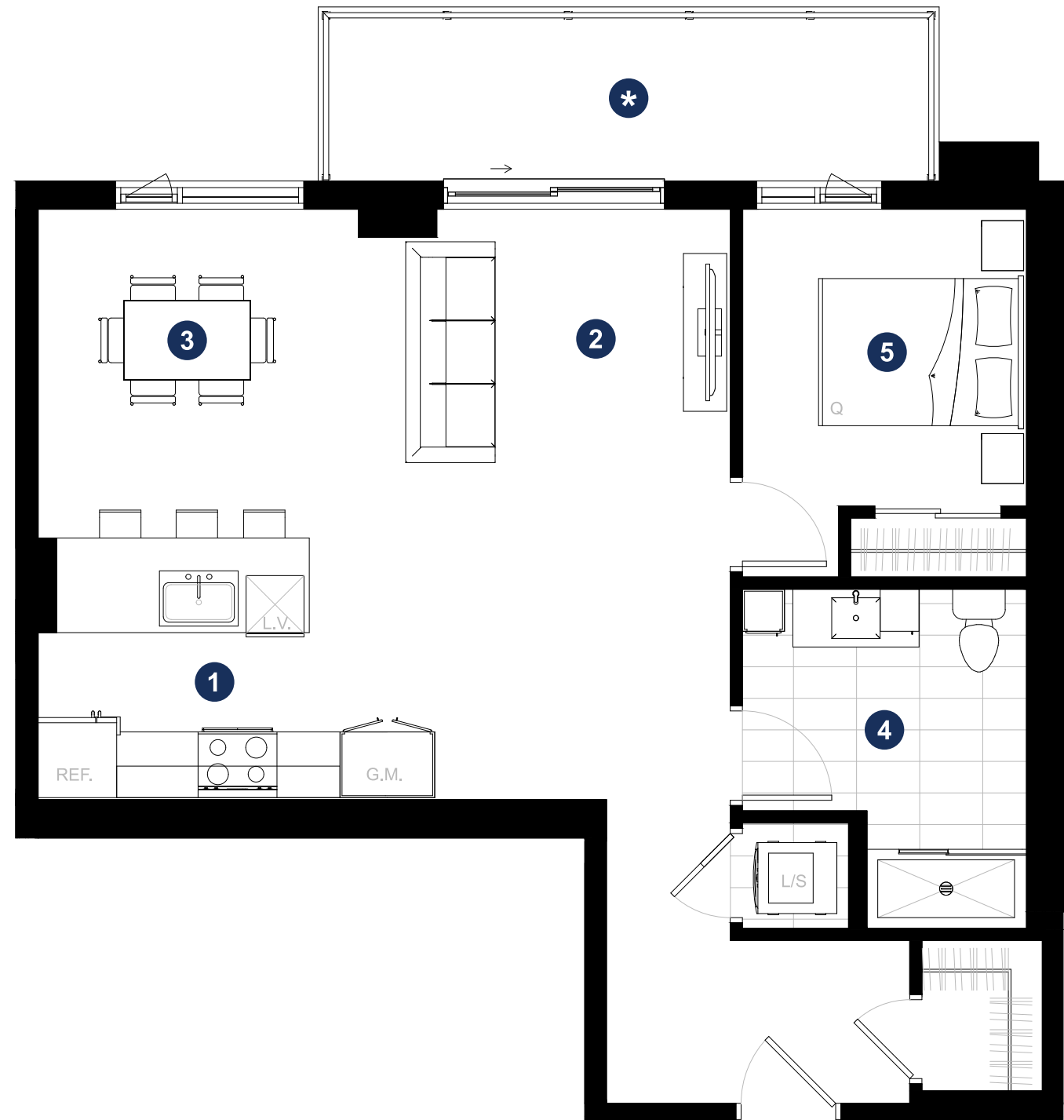
798 pi<sup>2</sup>/ft<sup>2</sup>



- 1 KITCHEN | CUISINE  
12'-7" x 9'-6"
- 2 LIVING | SALON  
10'-9" x 12'-1"
- 3 DINING | SALLE À MANGER  
10'-2" x 9'-2"
- 4 BATHROOM 1 | SALLE DE BAIN 1  
9'-0" x 10'-9"
- 5 BEDROOM 1 | CHAMBRE 1  
10'-0" x 9'-5"

\* Dimensions of balconies and terraces vary. | Les dimensions des balcons et des terrasses varient.

204 / 304 / 404 / 504 / 604 /  
704 / 804 / 904 / 1004



FLOORS | ÉTAGES 2-10

