

TYPE

P

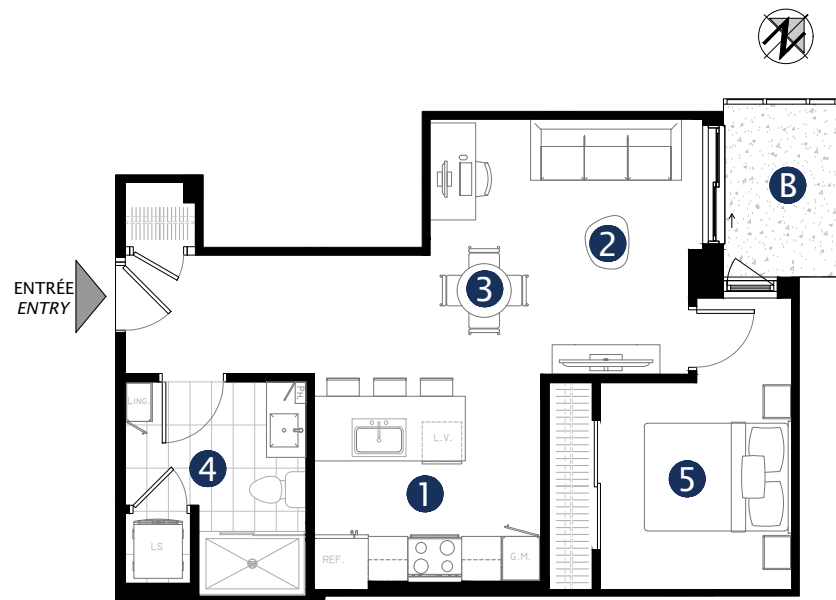
615 pi² / sqft



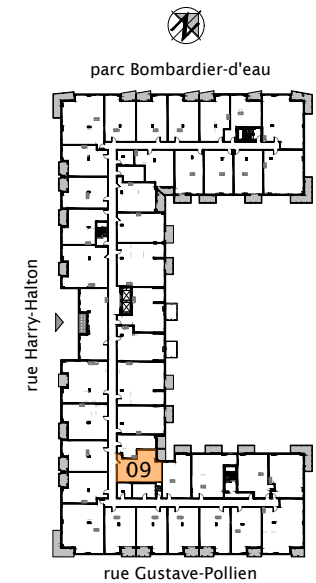
- 1 CUISINE / KITCHEN
10'-6" x 9'-0"
- 2 SALON / LIVING
11'-10" x 12'-8"
- 3 SALLE À MANGER / DINING
5'-7" x 5'-2"
- 4 SALLE DE BAIN / BATHROOM
6'-11" x 8'-5"
- 5 CHAMBRE 1 / BEDROOM 1
9'-7" x 8'-10"
- B BALCON / BALCONY
Les dimensions et l'emplacement
varient selon l'étage
*Dimensions and location vary
depending on the floor*

UNITÉS / UNITS

109
209
309
409
509



LIVEO
BOIS-FRANC



CONDOS LOCATIFS
RENTAL CONDOS
liveoboisfranc.com

Mobilier à titre indicatif seulement, non-inclus. Électroménagers inclus. Plans préliminaires sujets à changements. La superficie brute des logements n'inclut pas celle des balcons et/ou terrasses. La superficie et les dimensions des plans de vente sont approximatives et peuvent varier.

Furnishings shown are for illustrative purposes only and are not included. Appliances are included. Preliminary plans are subject to modification. The unit area does not include balconies or terraces. All areas and dimensions are approximate and may vary.