

TYPE



2



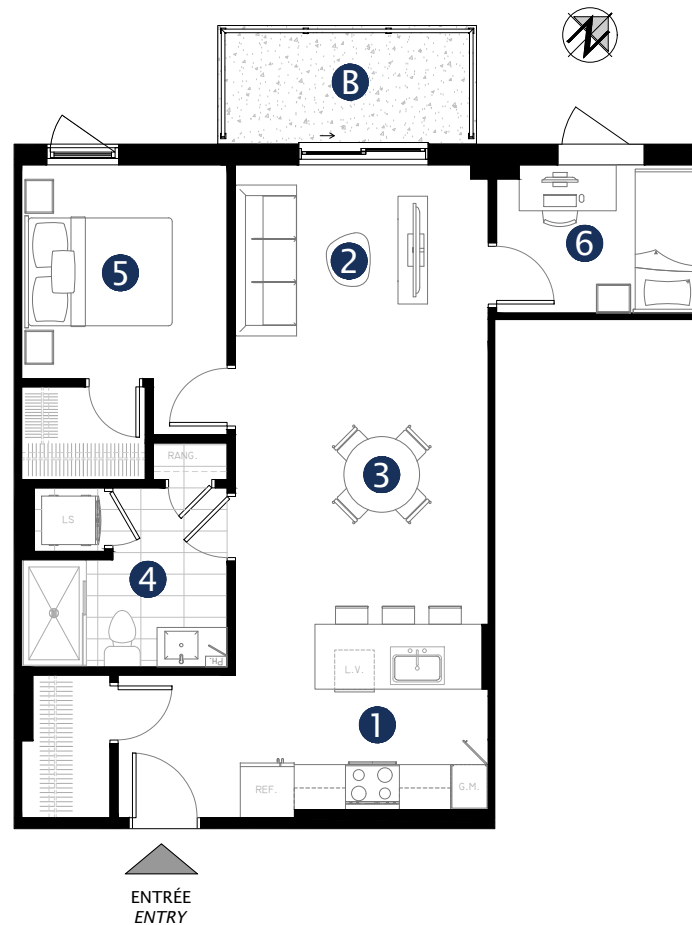
1

792 pi² / sqft

- 1** CUISINE / KITCHEN
11'-6" x 9'-0"
- 2** SALON / LIVING
11'-9" x 10'-8"
- 3** SALLE À MANGER / DINING
11'-9" x 10'-8"
- 4** SALLE DE BAIN / BATHROOM
6'-7" x 8'-4"
- 5** CHAMBRE 1 / BEDROOM 1
9'-7" x 10'-0"
- 6** CHAMBRE 2 / BEDROOM 2
9'-6" x 6'-10"
- B** BALCON / BALCONY
Les dimensions et l'emplacement varient selon l'étage
Dimensions and location vary depending on the floor

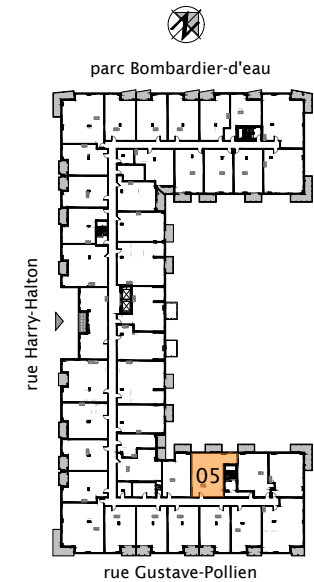
UNITÉS / UNITS

205
305
405
505



LIVEO

BOIS-FRANC



CONDOS LOCATIFS
RENTAL CONDOS
liveoboisfranc.com

Mobilier à titre indicatif seulement, non-inclus. Électroménagers inclus. Plans préliminaires sujets à changements. La superficie brute des logements n'inclut pas celle des balcons et/ou terrasses. La superficie et les dimensions des plans de vente sont approximatives et peuvent varier.

Furnishings shown are for illustrative purposes only and are not included. Appliances are included. Preliminary plans are subject to modification. The unit area does not include balconies or terraces. All areas and dimensions are approximate and may vary.