

TYPE

U

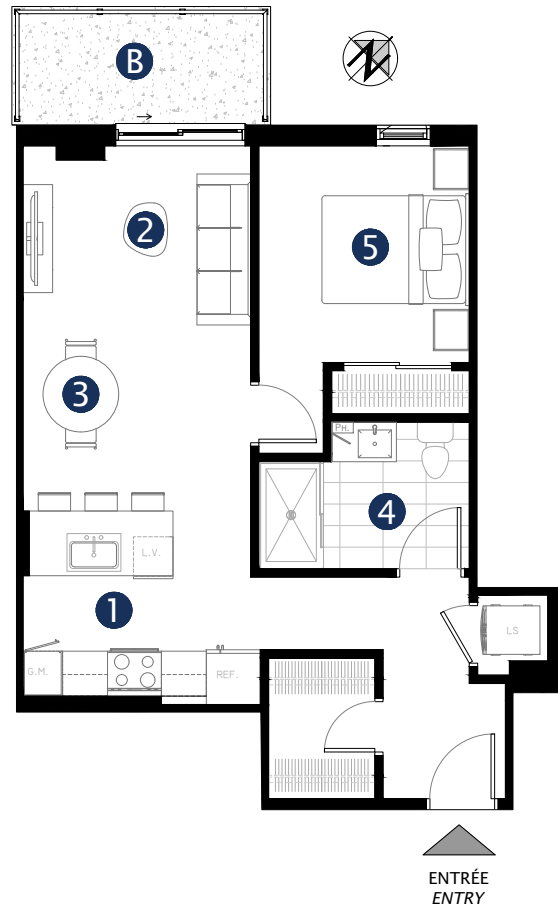
651 pi<sup>2</sup> / sqft



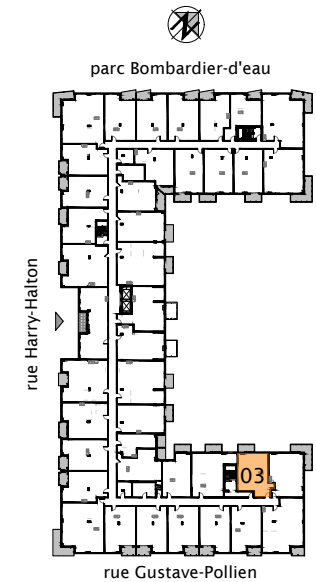
- 1** CUISINE / KITCHEN  
11'-0" x 9'-0"
- 2** SALON / LIVING  
10'-7" x 8'-6"
- 3** SALLE À MANGER / DINING  
10'-7" x 8'-6"
- 4** SALLE DE BAIN / BATHROOM  
6'-9" x 6'-10"
- 5** CHAMBRE 1 / BEDROOM 1  
9'-9" x 10'-1"
- B** BALCON / BALCONY  
Les dimensions et l'emplacement  
varient selon l'étage  
*Dimensions and location vary  
depending on the floor*

UNITÉS / UNITS

203  
303  
403  
503



LIVEO  
BOIS-FRANC



CONDOS LOCATIFS  
RENTAL CONDOS  
[liveoboisfranc.com](http://liveoboisfranc.com)

Mobilier à titre indicatif seulement, non-inclus. Électroménagers inclus. Plans préliminaires sujets à changements. La superficie brute des logements n'inclut pas celle des balcons et/ou terrasses. La superficie et les dimensions des plans de vente sont approximatives et peuvent varier.

Furnishings shown are for illustrative purposes only and are not included. Appliances are included. Preliminary plans are subject to modification. The unit area does not include balconies or terraces. All areas and dimensions are approximate and may vary.